

APPENDIX A
SUPPORTING INFORMATION

Information Request Log

Stormwater Alternatives Study for
Western and Southwestern Winnetka
Village of Winnetka, Illinois

Item/Description	Date Requested	Requested From	Date Received	Status of Request
GIS Data				
LIDAR Elevation Contours, including bare earth points	10/12/15	V. of Winnetka	10/26/15	Received. 1' elevation contours that are limited to Village Corp. Limits. 2' contours provided for remainder of study area.
LIDAR bare earth points	10/12/15	V. of Winnetka	12/9/15	Received from MGP and from Cook County.
Orthophotos (i.e., aerial imagery)	10/12/15	V. of Winnetka	12/15/15	Received from Cook County.
Parcel boundary shapefile, including existing land use and ownership	10/12/15	V. of Winnetka	10/26/15	Received
Transportation centerlines (e.g., roadways, railroad), with names	10/12/15	V. of Winnetka	10/26/15	Received
Roadway pavement shapefile	10/12/15	V. of Winnetka	10/26/15	Received
Land cover shapefiles (impervious and pervious land cover)	10/12/15	V. of Winnetka	10/26/15	Received
Existing tree canopy locations	10/12/15	V. of Winnetka	10/26/15	Received
Soils and geology information	10/12/15			Not available from Village. Will refer to NRCS data
Utility Data:				
• Public utilities (storm and sanitary sewer, water main) with diameters and inverts	10/12/15	V. of Winnetka	10/26/15	Received
• sewer manholes with rims and inverts	10/12/15	V. of Winnetka	10/26/15	Received
• storm inlets with rims and inverts	10/12/15	V. of Winnetka	10/26/15	Received
• outfalls with inverts	10/12/15	V. of Winnetka	10/26/15	Received
• diversion structures	10/12/15	V. of Winnetka	10/26/15	Received
• pump stations	10/12/15	V. of Winnetka	11/25/15	Received
• private utilities - electric	10/12/15	V. of Winnetka	10/26/15	Received
• private utilities (gas, phone, cable) mapping		Utility Companies		A design locate request will be made of the specific utilities as needed.
MWRDGC system mapping/GIS	10/12/15	V. of Winnetka	10/26/15	Received. Village has rough mapping, but has not proven to be 100% accurate.
MWRDGC system mapping/GIS		MWRDGC		Record drawings will be requested as needed
Existing hydrology (i.e., streams, creeks, channels, ditches)	10/12/15	V. of Winnetka	10/26/15	Received

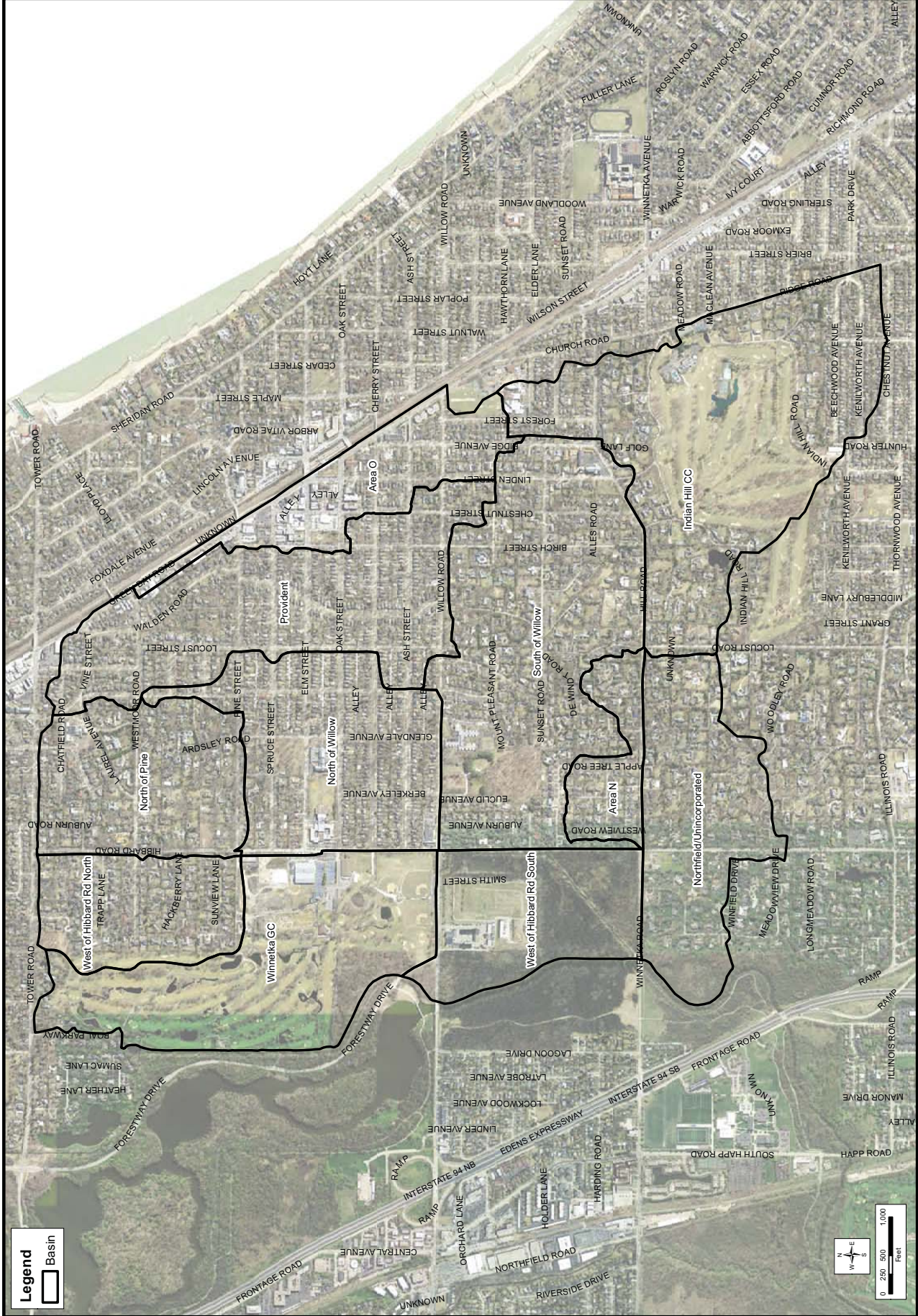
Field topographic data of Skokie Ditch drainage system located upstream (southeast) of Hill Road	11/20/15	V. of Winnetka	11/25/15	Received
Kenilworth Storm system mapping (36" dia. sewer downstream (east) of Indian Hill GC)	11/30/15	V. of Winnetka	12/21/15	Received from Kenilworth
Northfield Storm system mapping (neighborhood located south of Winnetka Rd. that is tributary to Winnetka Rd. Pump Station)	11/30/15	V. of Winnetka	12/21/15	Received from Kenilworth
IDOT drawings of Willow Rd. storm sewer plans (referenced on p. 17 of 4/22/15 MWH report)	11/30/15	V. of Winnetka	12/21/15	Received from Kenilworth

Reports and Documentation				
Winnetka Capital Improvement Plan	10/12/15	V. of Winnetka	10/26/15	2015 from Village website. 2016 will be available from the Village shortly.
Winnetka Road Pump Station record drawings and operating protocol, including plans for recent upgrade	10/12/15	V. of Winnetka	12/10/15	Received
Ash St. Pump Station record drawings and operating protocol, including plans for recent upgrade	11/30/15	V. of Winnetka	12/10/15	Received
Sept. 2009 Burke Flood Risk Reduction Assessment	10/12/15	V. of Winnetka	10/26/15	Received
Willow Rd. Dam record drawings, including recent improvements/modifications	10/12/15			Will request from FPD Cook County
CBBEL XP-SWMM models	10/12/15	V. of Winnetka	10/26/15	Received
Detailed cost estimate data supporting past Burke studies	10/12/15	V. of Winnetka	10/15/15	Report on Village website includes summary costs, which are all that is available.
Detailed cost estimate data supporting past MWH study	10/12/15	V. of Winnetka	12/10/15	Received
Detailed cost estimate data supporting past V3 study	10/12/15	V. of Winnetka	10/15/15	V3 report on Village website contains this information
Historical flood of record high water marks and documentation	10/12/15	V. of Winnetka	02/04/16	Received
Historical rain gauge data	10/12/15			Reference Cook County Precipitation Network Gauge #2.
Flood damage survey results	10/12/15	V. of Winnetka	12/10/15	Received
2011 Sanitary survey results		V. of Winnetka	10/26/15	Received
Winnetka Park District plans/studies for flood	10/12/15	V. of Winnetka		Village has requested from the Park District

reduction improvements at the Winnetka Golf Club				
Drainage/Flood Studies performed by Kenilworth (Skokie Ditch area downstream of Indian Hill GC)	11/30/15	Kenilworth	12/21/15	Received from Winnetka
Drainage/Flood Studies performed by Northfield	11/30/15	Northfield	11/28/15	Received from Northfield - 2009 Study

Record Drawings and Plans				
Plans/drawings for past stormwater drainage improvements		V. of Winnetka		Will be provided by the Village as available and needed. Most will be in paper format.
Planned new/redevelopment projects in the Village	10/12/15	V. of Winnetka		Reference CIP
Planned street replacement and/or rehabilitation projects	10/12/15	V. of Winnetka		Reference CIP
Public agency improvement plans (e.g., schools, library)		V. of Winnetka	03/11/16	Habitat guidance plan received from Winnetka Park District
Relevant existing community/neighborhood plans		V. of Winnetka		Will be provided by the Village as available and needed. Most will be in paper format.
Field survey and geotechnical investigations (4/22/15 MWH report)	11/30/15	V. of Winnetka	03/09/16	Received from Winnetka
Landfill record drawings and closure plans	11/30/15	V. of Winnetka		Will be provided by the Village

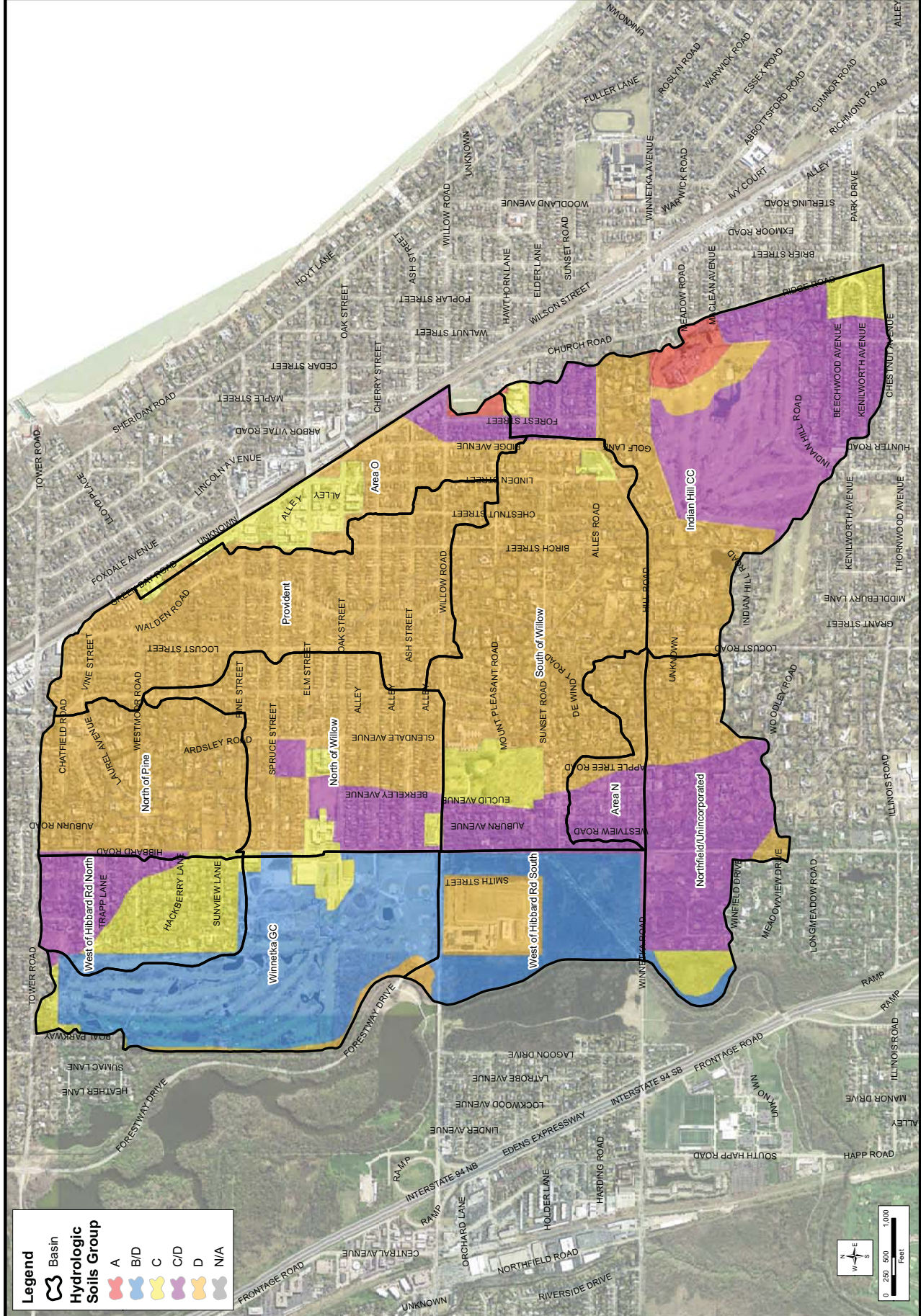
DRAINAGE BASINS



User: dnc Date: 5/31/2016 Time: 2:43:08 PM

Path: S:\JUL16\00-1689\1619\010\Drawings\IS\Figures\Flooding\053116\Drainage Basins 11x17.mxd

HYDROLOGIC SOILS GROUP



Legend

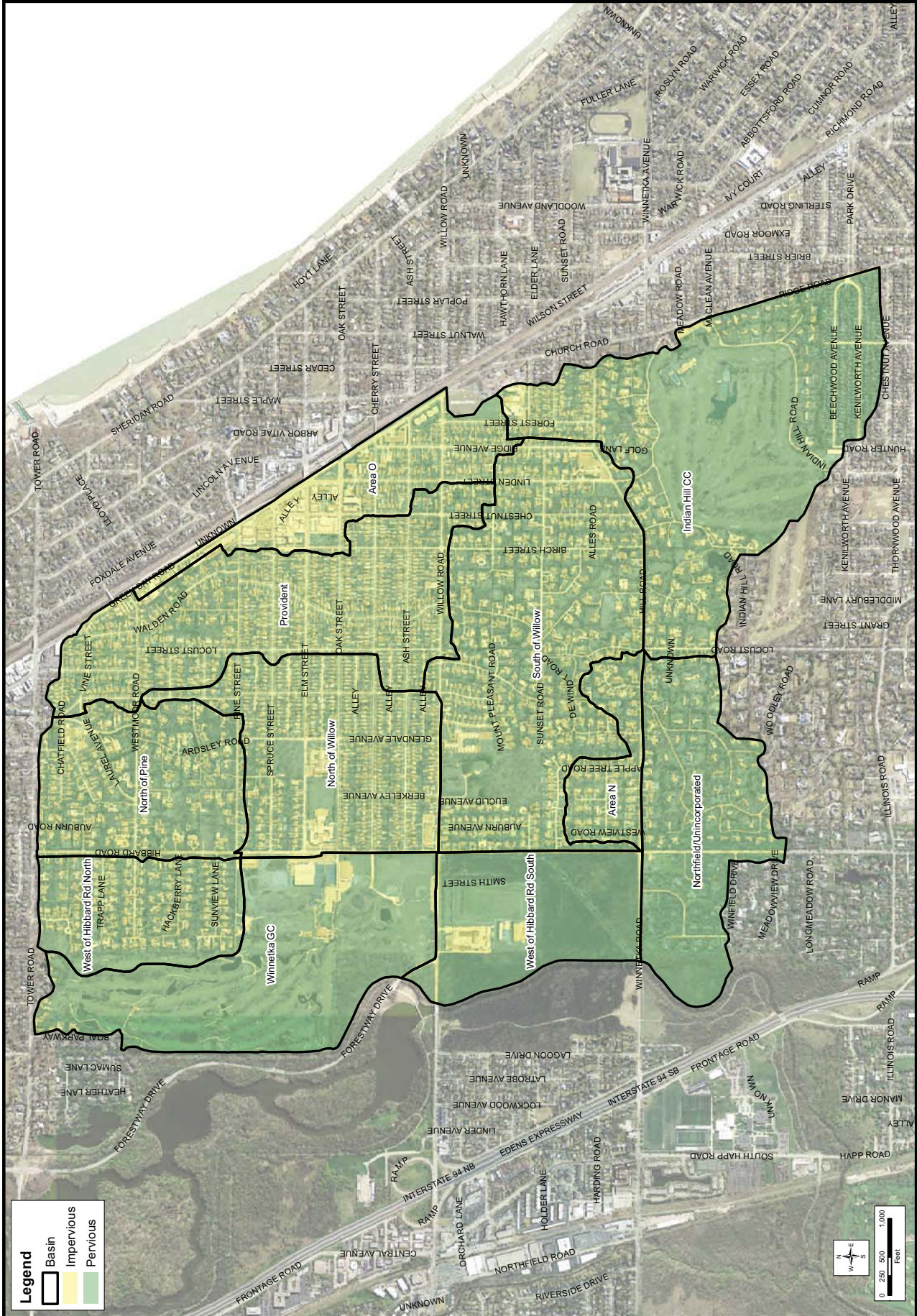
Basin

Hydrologic Soils Group

A	B/D	C	C/D	D	N/A
---	-----	---	-----	---	-----

0 250 500 1,000 Feet

LAND USE MAP



Legend

- Basin
- Impervious
- Pervious

0 250 500 1,000
Feet