



Notes
 Stakeholder Meeting – Winnetka School District 36
 Western and Southwestern Stormwater Evaluation
 Village of Winnetka
 November 18, 2015

Meeting Location: Winnetka Village Hall	Job No.: 1619.010
Meeting Purpose: Initial Stakeholder Meeting	

Discussion:

1. Introductions

<u>Name/Representing</u>	<u>Address</u>	<u>Contact Information</u>
• Greg Kurr, Chief Financial Officer Winnetka School District 36	1235 Oak Street, Winnetka	gregkurr@winnetka36.org 847-446-9400
• Rob Bahan, Village Manager Village of Winnetka	510 Green Bay Road, Winnetka	rbahan@winnetka.org 847-716-3541
• Steve Saunders, PWD and Village Engineer, Village of Winnetka	1390 Willow Road, Winnetka	ssaunders@winnetka.org 847-716-3534
• Jim Bernahl, Asst. PWD Village of Winnetka	1390 Willow Road, Winnetka	jbernahl@winnetka.org 847-716-3261
• Mike Waldron, Project Manager Strand Associates, Inc.	1170 Houbolt Road, Joliet	mike.waldron@strand.com 815-744-4200
• Mark Shubak, Project Engineer Strand Associates, Inc.	910 Wingra Drive, Madison, WI	mark.shubak@strand.com 608-251-4843
• John Lyons, Project Engineer Strand Associates, Inc.	615 Elsinore Place, Ste. 320, Cincinnati, OH	john.lyons@strand.com 513-861-5600
• Gary Wolnitzek, Project Consultant Human Nature, Inc.	990 St. Paul Drive, Cincinnati, OH	gwolnitzek@humannature.cc 513-281-2211

2. Items of Discussion – Skokie and Washburne School Property

- a. The school recently improved the play fields between Washburne School (the middle school on the west side of the site) and Skokie School (the elementary school on the east side of the site).
- b. The playfield is used every day during school and is a necessary area of the school sites.
- c. The baseball fields do not appear to be heavily used but the playfield is used significantly by a local soccer club named the Scottish Soccer Academy.
- d. The soccer academy recently invested in turf improvements at the site and it appears they are an important user of the site that will need to be engaged if changes to the playfields are considered.
- e. The District has a 5-year agreement with the soccer academy for use of the fields and from their website it appears they use the fields almost daily.
- f. Greg indicated that the soccer academy manages use of the fields and will cancel their activities when the field is wet, which he seemed to indicate does occur after most rain events.
- g. The Park District maintains the lawns on the play fields.
- h. Greg said the District has contemplated building a track around the field but have never moved this idea forward.
- i. Greg noted that the stormwater detention area located south of Washburne School drains very quickly. This is only a shallow 2-ft or 3-ft deep area built to compensate for fill volumes under recent building improvements.
- j. Greg stressed that if any improvements are done on the site they need to be performed in the summer when school is out. This is the most critical concern he seemed to have with potential improvements on the property.



- k. Greg indicated that parking lot improvements are desired at the site and that they would be willing to consider permeable pavement.

3. Items of Discussion – Crow Island Elementary School

- a. This is the most crowded school in the District's system.
- b. They don't own much land on this site. The Park District owns most of the property in the area.
- c. Greg indicated that they are considering temporary classrooms on the site, but not brick and mortar sites.
- d. There does not appear to be any real opportunities for stormwater management on this site.

4. Items of Discussion – Hubbard Woods Elementary and Greeley Elementary School

- a. We did not discuss these school sites specifically.
- b. Hubbard Woods is located high in the watershed and has limited open space and some parking areas. Seems like opportunities on this site are limited.
- c. Greeley is located in the Lake Michigan watershed and does not pose any opportunities for this study.

5. Potential Opportunities Identified

- a. The most significant opportunity identified was the potential for stormwater storage on the Washburne-Skokie playfield area.
- b. This playfield is immediately adjacent to the tree streets area - one of the areas most susceptible to flooding. Steve Saunders indicated that this neighborhood gets non-structural flooding a couple times a year and addressing this nuisance flooding could go a long way with the residents.
- c. It appears above and below ground storage are opportunities, but above ground may be met with opposition since it would impact the current uses on the site.
- d. This opportunity seems to be a good candidate for an early-action project.
- e. Modifications to the parking lots could provide stormwater management benefits.

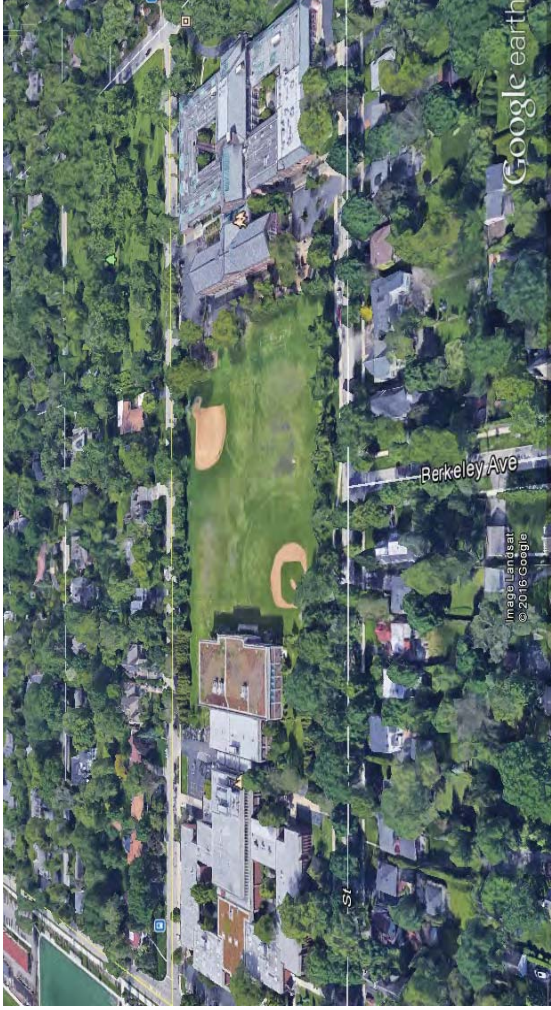
6. Action Items

- a. Determine the potential for the Washburne-Skokie playfield to provide frequent up to 100-year stormwater storage benefits.
- b. Determine whether modifications to the Washburne-Skokie parking lots provides any stormwater management benefits.

7. Proposed Next Steps

- a. If Washburne-Skokie playfield provides stormwater management and flood control benefits, provide concept level plans to the School District for consideration.
- b. If the School District seems agreeable to pursuing this opportunity we may need to consider engaging the soccer academy.

Skokie-Washburne Storage Project



Underground Storage with Playfields Rebuilt on Top

